

CARMEL VALLEY HISTORIAN

Sid Ormsbee Fire Lookout on Pinyon Peak

By Elizabeth Barratt, CVHS Historian

Visible for miles, the whitewashed Sid Ormsbee Fire Lookout sits perched atop a 2,249-foot mountain ridge overlooking the sprawling Santa Lucia Preserve. The local landmark, which did duty for close to a half-century, was named for Second Lieutenant Sidney C. Ormsbee, a State Forest Ranger from Santa Cruz, who lost his life in Italy during World War II.

Born in Oakland on April 16, 1916, Ormsbee moved to Santa Cruz when young. He graduated from Santa Cruz High School in 1936 and attended San Jose State College, where he majored in forestry engineering. He worked as a forest ranger in Felton until the outbreak of World War II. Following training as an aviation cadet, he was commissioned in 1942 in the Army Air Corps. He was sent to North Africa, where he participated in the Tunisian campaign. On August 16, 1943, he was killed when his plane was shot down after flying a bombing mission over Sicily during the Allied invasion. He is buried in Santa Cruz.



Photo: National Historic Lookout Register

The Ormsbee Fire Lookout station was constructed in 1948.

A plaque honoring its namesake was placed at the station the following year. Although decommissioned from fire observation service, the tower was designated for preservation in 2010 when it was registered as number 883 on the National Historic Lookout Register and number 93 on the California register.

The ridge on which the tower is located, known as Pinyon Peak, is located just south of Snivelys Ridge, above Garland Ranch Regional Park. The mountaintop is one of two peaks thus named in Monterey County. Its anglicized name, according to Donald Clark in "Monterey County Place Names," is supposed to refer to the Spanish word, *piñón*, for the edible pine nut seed. However, there are no pine trees in the area. A similar-sounding Spanish word, *peñón*, which means large rock or rocky mountain, has been suggested by historians the more likely word origin. It has been postulated that the spelling confusion came from early settlers who couldn't differentiate

the word sounds. Since the area (see **Lookout**, page 4)

Tularcitos Fire Station—California Department of Forestry

By Jeff Ohlson & Kim Pisor



Did you know that the original Department of Forestry Tularcitos Fire Station was located 2 1/2 miles east of Carmel Valley Village near the entrance to Sleepy Hollow?

The Sleepy Hollow site was built in the 1940s and was deactivated in 1979 when the new Forestry Station on Cachagua Road was completed. The original barracks and kitchen were made from surplus military

(See **Station**, page 4)

Photo from the CVHS Archives

- 2
- *A Message from the President
- *Volunteer Activities
- 3
- *CV Directory Issues Wanted
- *From Failing to Fabulous Again
- *A History of Robles del Rio
- 5
- *Donations and Contributions
- 6
- *Upcoming Events
- *Help Wanted
- *Photos by James Ziegler

A Message from the President, Kim Williams

Summer is almost here!. If you are looking for something fun (and educational) to do with your children or visiting grandchildren...plan a trip to the History Center...

...or drop by yourself for a quiet visit to see our new photographic history wall with views of the Valley from a hundred years ago with its many fruit orchards and dirt roads. On really hot days, the History Center is a cool place to visit!

We staffed a booth at the CV Garden Show receiving many positive comments with good interactions with the attendees. We are still surprised that many people do not know that we have a first-class museum in the Valley. To that end, we will also have a booth at the CV Fiesta the first weekend in August. If you enjoy meeting people and talking about the Valley, we'd love to have your help for the Fiesta. Just let us know.



Kim Williams

Volunteer Activities



Donna Zahn talks to the Cub Scouts about history in preparation for their exhibit. Photo by Jeff Ohlson



Andy Case and Donna Zahn work on the layout for the Cub Scout Exhibit. The exhibit will be moving to the CV Library for the month of August. Photo by Jeff Ohlson



Photo by Jeff Ohlson

The Making and Mailing of CVHS Newsletters

Newsletters have long been a traditional service to our community. Members and non-members alike have enjoyed this publication since our founders initiated it in the late 1980s.

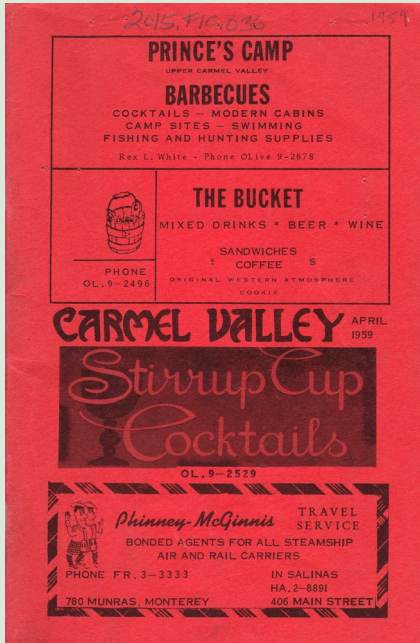
It takes time and effort from volunteers, however, and you too can join in on the fun of sending the newsletters out to our membership and friends of the Society.

This could even be a good community service project for high school students – they not only could help but would meet the people and process behind our newsletter publication.

The mailing process includes folding, tabbing, and labeling. Although tedious, there is much fun and camaraderie for those involved. Prep is done the last weekend of February, May, August and November, and takes just a couple of hours. Contact Kim Williams (659-1307) to volunteer.

Carmel Valley Directory Issues Wanted

By Elizabeth Barratt



Our Research Library has a sizeable collection of the former Carmel Valley Directory, the small soft cover telephone directory and advertisement booklets published by Ralph E. Erion and mailed or distributed to Valley residents between the years 1949-1999.

The Collection Committee is looking to fill in some gaps and would like members to check for issues from the following years to donate to our collection: 1949, 1950, 1951, 1952, 1953, 1956, 1957, 1958, 1970, 1985, 1986, 1987, 1997 and 1998.

From Failing to Fabulous Again!

By Cherie Ohlson

This Tiffany-style lamp was donated to the CVHS by Peter Coakley. He inherited the lamp from his grandmother who passed away in 1975. The lamp was restored to its original condition by Carmel Valley glass artists Alan Masaoka and Jennifer Hallock of Masaoka Glass Design on Center Street. Although there are no identifying marks, the lamp is likely from the arts & crafts period of the early 1900s. Its restoration was time-consuming, as the piece was in precarious



Photo by Cherie Ohlson



Photo by Kim Williams

condition with the solder between the glass pieces especially weak. Many thanks to Alan & Jennifer for their meticulous work in restoring this colorful piece of history.

A History of Robles del Rio

By Jeff Ohlson

The Historical Society along with a team of volunteers are assembling the rich history of the Robles del Rio Subdivision which, of course, includes the famous Ridge Restaurant in the Lodge, which tragically burned in 2010. The team hopes our readers might have photographs of the inside of the restaurant or any other photos of the Lodge that could be used in this history project. There were many weddings and receptions held at the Lodge, so many photographs should be available.

If you have these photos, call the Historical Society at (831) 659-5715, write to PO Box 1612, Carmel Valley, CA 93924, or email the Historical Society at cvhs3@live.net

Thank you for your support.

Photo from the CVHS Archives



(**Lookout, from page 1**) around the fire tower is strewn with craggy outcroppings, the latter interpretation of “stony” might make more sense.

During the years the fire station functioned, it was occupied seasonally from the first of May until November each year. The four-story, 30 foot tall structure had a 256 square foot floor area cab that contained living quarters as well as an observation area.

The design enabled the operator to both live and work on the premises. Besides windows around the cab perimeter, a catwalk surround allowed for 360-degree outdoor visibility for fire observation.

For a ranger on seasonal duty at the fire tower, the day followed a specific dawn to dusk routine. Every two hours, there were 12 stipulated landscape points that the lookout was required to observe. Three times a day, the lookout also had to descend the stairs and check nearby weather measuring equipment and make a report. If an airplane was flying in the vicinity, the lookout had to identify it and telephone in a report. Daily records were kept on all required checks on fire, weather and airplane spottings.

In the event of an actual fire, the lookout determined its exact direction via a device known as an Osbourne Fire Finder. Similar to surveyor’s equipment, the finder used a topographic map centered on a horizontal table with a



This is the view that most of us see.

Photo by Christine Williams

circular rim and two sighting apertures. The instrument was set up inside the observation room and functioned to pinpoint fires at great distances. Once accurately located, information on the blaze was telephoned into the CALFIRE Carmel Hill Station. In addition, a short wave radio enabled the ranger to communicate with firefighters who were called in to work both on the ground and in the air.

Records are scant regarding the exact year the tower ceased to function. According to a Monterey County historical property assessment, the general consensus is that the lookout was in use until about the end of 1985.

The structure itself was almost lost in 1996, when the fifty-year lease between the California Department of Forestry and Fire Protection and the property owners was about to expire. At that time, the unused building had weathered, needed repairs and had suffered damage by vandals. A cooperative agreement to save the structure was reached. Repairs and asbestos removal were completed, the building was refurbished, and a fresh coat of paint was applied.

Now a designated historic landmark, the Sid Ormsbee Fire Station continues to grace the Carmel Valley landscape, providing a focal point for hikers and artists drawn to its commanding presence atop a prominent local mountain crest.

(**Station, from page 1**) metal buildings that were very hot in summer and freezing in the late fire season. Two of these metal buildings from the original site were repurposed on the Rana Creek Ranch.



The only remnants that still exist are the stone terrace walls completed in 1960 – the firefighters who built them might now consider them a monument to the old Station

Photo by Jeff Ohlson



Tularcitos Station Crew – circa 1965

L to R (standing): George Toussaint (Foreman 1), John Heydeman (FF), Bob Wells (FF), Don Stacey (FFTD), Kim Pisor (FF), Dick Tiller (Foreman 1), unknown, Bob Boyer (FF), unknown.

L to R (kneeling): Jim Bliss (Foreman 1), Jerry Pomponio (FF), Larry Gross (FF), Ed McCafferty (HFEO), and Jack Davidson (HFEO).

Photo from the CVHS Archives

Financial Contributions (February, March & April)

General Fund: Susan Francis, Brenda Mellinger, James & Anna Rheim, Warren & Penny Wood

In Memory of Beverly Flippen: Maxine Callinan

In Memory of Rod & Ann Mills: Peter Neumeier

In Memory of Ruth Peace: Maxine Callinan, Ellsworth Gregory, Nicole Nedoff

Donations: Documents, Photos, Artifacts, Library Materials (February, March & April)

Tom Augustitus: Color photo of Lars de Jounge flying east over Carmel Valley airfield in his KLEM airplane, circa 1990's

Maxine Callinan: 2 books: "Fundraising for Small Museums" and "Reinventing the Museum- The Evolving Conversation on the Paradigm Shift"

Bud Carlson: 22 vintage postcards from the early 1900's (postmarks from between 1908 & 1915)

Dr. Robert Chapman: March 1929 map showing subdivisions of and owners in Carmel & Cachagua Valleys

Stephanie Culbert: Various photos, binders, books and other written materials from personal collection

Sharon Cuneo: Card with photograph copy of water-color depicting Rosie's Cracker Barrel, original by artist Ronald E. Bean, Copy of black & white photo of Robles del Rio store, 7 copies of various personalized cartoons which were hung in Rosie's Cracker Barrel for decades

Steve Dorrance: Various historical local assessors plats & maps from Carmel Valley/Cachagua & Salinas River areas, 2 magazines, 1 team-roping rope

Bob Mattson: Original "Bob Mattson Saddlery - Custom Boots" sign from Farm Center buildings

Nick Elliot, Holman Ranch: 5.5" x 7" photocopy of photograph depicting Clifford Washington (chef), Jimmy Lyle (Head Waiter) of Wills' Fargo Restaurant, and 2 others (undetermined), Original Certificate of "Credentials of Minister" for Willard Edward Fay, dated April 18th, 1969 from the Universal Life Church

Cal & Shirley Garner: 9 vintage Carmel Valley telephone directories: 1983, '88, '90, '91, '92, '93, '94, '95, '96

Desirée Gillingham: C.V. Rodeo souvenir program from September 17th & 18th, 1983 with two tickets and event

listings, commemorative C.V. Centennial envelope posted August 6, 1989, Monterey Herald newspaper article dated 3/5/09 featuring Joan Baez C.V. home on historic resource list and two copies of the Carmel Pine Cone dated 12/31/92 which feature an article regarding Leon Panetta being appointed to cabinet position of Director of the Office of Management & Budget

Frank Keith: 4 vintage schoolbooks: Treatise on Arithmetic, The Institutes of English Grammar, The Elementary Spelling Book, Smeaton's Etymology

Skip Marquard: 30 various historical local maps, 2 blueprints and 3 1950's Porter Marquard letters all pertaining to Robles del Rio area subdivision

Don Prince: Memorabilia pertaining to Prince's Camp

Robles del Rio Carmelo Water Company, by Diane Douglas: Vintage cast-iron Notary Public Seal embosser: "Robles del Rio Carmelo Water Co., incorporated July 23rd, 1932"

Mary Sherman: Vintage Douglas Camps - Pebble Beach brochure, featuring illustrations by Jo Mora. Douglas Camps were located in Pebble Beach from 1925 to 1948, then moved to Carmel Valley from 1949 to 2012

Imogene Speiser: School report "Rosie's Cracker Barrel" written in 1964 by Tegan Speiser while she was a 3rd grade student in Viola Belemen's class at Tularcitos School

D'Tim Watson: Bag of fossil bones: 1.) 1 2.5" long (rib appearance), 2.) 7 small fragments found on the Jouillan Vineyard in Cachagua by owner

Yellow Brick Road Benefit Shop: 2 books: Monterey & Santa Cruz Counties - Cradle of California's History & Romance, Volumes I & II

THANK YOU FOR YOUR GENEROUS SUPPORT!

Welcome New Members

Jaime & Christine del Valle

Share your Historian with a neighbor,
and invite them to join!

Berta Ranch Tools

By Jeff Ohlson

Although its actual usage on the ranch is unknown, the center connecting rod of this device can be opened quickly by pulling on the spring end thus releasing the rod. One then can attach it to a cable (or other device) then the center rod can be easily reattached. This device would function just as reliably today as it did a century ago. [If you know about this tool, please contact the Society.]



Carmel Valley Historical Society

WEB | carmelvalleyhistoricalsociety.org
 EMAIL | cvhs3@live.net
 CALL | (831) 659-5715
 WRITE | PO Box 1612
 Carmel Valley, CA 93924-1612
 VISIT | 77 West Carmel Valley Road
 History Center Hours:
 Fridays and Saturdays: 12:00-4:00
 Library: By Appointment

Board of Directors

Kim Williams	President
Gary Tate	Vice President
Dave Terdy	Treasurer
Cherie Ohlson	Secretary
Maxine Callinan	
Andy Case	
Julie Cason	
Ellsworth Gregory	Board Member Emeritus

Upcoming Events

Sat.-Sun., August 6-7 2016
CV FIESTA—CVHS BOOTH
10 am-5pm

Saturday, October 29, 2016
PARTY IN THE VILLAGE!
7-11 pm at Hidden Valley

Help Wanted

Would you like to help out your Historical Society? We are in need of a recording secretary to take minutes of our board meetings. Applicants must have good computer skills. Meetings are once a month. Talk to any board member for more information.

CARMEL VALLEY HISTORICAL SOCIETY
PO BOX 1612
CARMEL VALLEY, CA 93924-1612

NON-PROFIT ORG.
U.S. POSTAGE PAID
PERMIT # 10
CARMEL VALLEY, CA 93924

Photos by James Ziegler

from the CVHS Archives



Carmel Valley Cowboys



Carmel Valley Cows